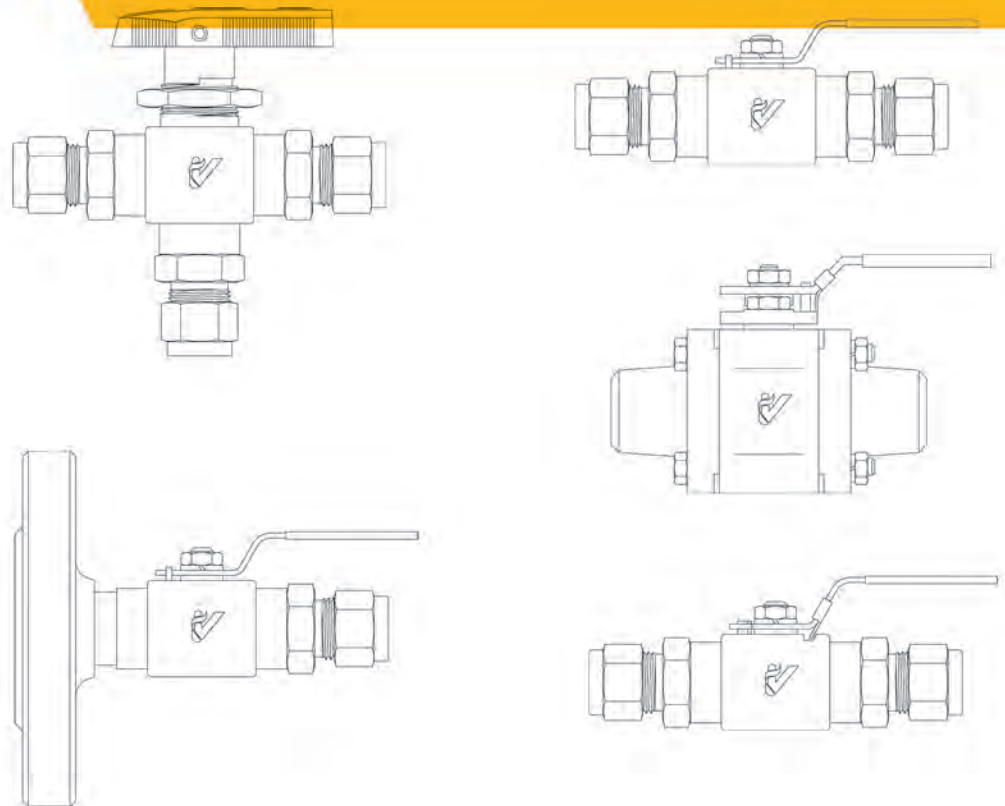




# XYF-QFT 系列 分体式仪表球阀

XYF - QFT Split-type instrument ball valve

# SINYA



## 目 录

## CONTENT

- 06 ● -QFT1-SK型卡套直通球阀  
Straight type valve with ferrules
- 06 ● -QFT1-LWF型内螺纹直通球阀  
Female straight type ball valve
- 07 ● -QFT1-SKF型卡套内螺纹直通球阀  
Female straight type ball valve with ferrules
- 07 ● -QFT1-FM型内外螺纹直通球阀  
Female-male straight type ball valve
- 08 ● -QFT3-SK型卡套三通球阀  
3-way ball valve with ferrules
- 08 ● -QFT3-LWF型内螺纹三通球阀  
3-way female valve
- 09 ● -QFT9-SK型卡套蒸汽球阀  
Steam ball valve with ferrules
- 09 ● -QFT9-LWF型内螺纹蒸汽球阀  
Female steam ball valve
- 10 ● -QFT9-SKF型卡套内螺纹蒸汽球阀  
Female steam ball valve with ferrules
- 10 ● -QFT9-FM型内外螺纹蒸汽球阀  
Female-male steam ball valve
- 11 ● -QFT10-SK型卡套闭锁球阀  
Closedown ball valve with ferrules
- 11 ● -QFT10-LWF型内螺纹闭锁球阀  
Female closedown ball valve
- 11 ● -QFT10-SKF型卡套内螺纹闭锁球阀  
Female closedown ball valve with ferrules
- 12 ● -QFT11-DKA型卡套圆体球阀  
Round-type ball valve with ferrules
- 12 ● -QFT11-DK8型取压圆体球阀  
Round-type ball valve for pressure tapping
- 12 ● -QFT11-LWFC型压力表圆体球阀  
Gauge round-type ball valve
- 13 ● -QFT11-SKFD型气源圆体球阀  
Air-supply round-type ball valve
- 13 ● -QFT12-DK型卡套方形高压球阀  
Square-type ball valve with ferrules
- 13 ● -QFT12-LWF型内螺纹方形高压球阀  
Female square-type ball valve
- 12 ● -QFT13-SK型卡套对夹球阀  
Wafer ball valve with ferrules
- 15 ● -QFT13-LWF型内螺纹对夹球阀  
Female wafer ball valve
- 14 ● -QFT13-CHF型承插焊对夹球阀  
Socket welded wafer ball valve
- 14 ● -QFT13-CH型对焊对夹球阀  
Butt welded wafer ball valve
- 15 ● -QFT13-PD型焊接对夹球阀  
welding wafer ball valve
- 15 ● -QFT13-FH型法兰对夹球阀  
Flange welded wafer ball valve

## XYF — QFT Split-type instrument ball valve

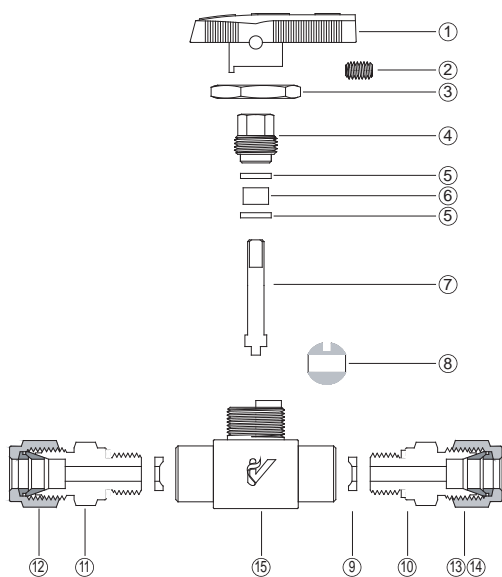
### 特点 Features

- 多种结构形式、连接方式和尺寸可选 Many structure types, connecting modes and sizes for selection.
- 阀杆与球分体式，上密封填料可在线调整 The valve stem is split from the valve ball and the top seal packing can be adjusted online.
- 介质双向流动，可同板和盘装 The medium is of bidirectional flow and can be installed on plates or pads.
- 尺寸 1/8~2in和3~42mm端接 Size 1/8~2" and 3~42mm end connection
- 每只阀门用1.1倍工作压力的氮气进行密封测试 Sealing test with nitrogen of 1.1 times of operating pressure should be done to each valve.

### 技术参数 Technical Parameters

阀体材料 Body material	密封材料 sealing materials	最高压力 Maximum pressure	温度范围 Temperature range
碳 钢 Carbon steel	聚四氟乙烯 PTFE	1500psi (103bar)	-46℃ ~ 232℃ (-51 ~ 450°F)
	增强聚四氟乙烯 PCTFE	6000psi (412bar)	
	聚醚醚酮 PEEK		
不 锈 钢 Stainless steel	聚四氟乙烯 PTFE	1500psi (103bar)	-46℃ ~ 232℃ (-51 ~ 450°F)
	增强聚四氟乙烯 PCTFE	6000psi (412bar)	
	聚醚醚酮 PEEK		
黄 铜 Brass	聚四氟乙烯 PTFE	1500psi (103bar)	-46℃ ~ 232℃ (-51 ~ 450°F)
	增强聚四氟乙烯 PCTFE	3000psi (206bar)	

### 结构材料 Structure Material



件号 Part No.	零件名称 Component	阀体材料 Body material	
		黄铜 Brass	不锈钢 Stainless steel
1	手柄 hand wheel	带有嵌件的尼龙 nylon with inserts	
2	固定螺钉 mounting bolt	不锈钢 Stainless steel	
3	锁紧螺母 Lock nut	黄铜 Brass	304、316SS
4	调节螺栓 Adjusting bolt	黄铜 Brass	304、316SS
5	衬垫 pad	黄铜 Brass	304、316SS
6	填料 top packing	PTFE、PCTFE、PEEK	
7	阀杆 valve stem	黄铜 Brass	304、316SS
8	球 ball	黄铜 Brass	304、316SS
9	球填料 ball packing	PTFE、PCTFE	
10	密封垫 sealing pad	PTFE、PCTFE	
11	接头体 connector body	黄铜 Brass	304、316SS
12	螺母 nut	黄铜 Brass	304、316SS
13	前卡套 front ferrule	黄铜 Brass	304、316SS
14	后卡套 rear ferrule	黄铜 Brass	304、316SS
15	阀体 valve body	黄铜 Brass	304、316SS

## ● 流量数据 Flow data

流量系数 (Cv) Flow coefficient	降至大气压的压降 Drop to Air pressure drop ( $\Delta p$ )、psi (bar)					
	10 (0.68)	50 (3.4)	100 (6.8)	10 (0.68)	50 (3.4)	100 (6.8)
	空气流量 Air flow std ft <sup>3</sup> /min (std L/min)			水流量 Water Flow 美制 American gal/min (std L/min)		
0.06	0.7 (19)	1.8 (50)	3.2 (90)	0.2 (0.7)	0.4 (1.5)	0.6 (2.2)
0.10	1.1 (31)	3.0 (84)	5.3 (150)	0.3 (1.1)	0.7 (2.6)	1.0 (3.7)
0.15	1.7 (48)	4.5 (120)	8.0 (220)	0.4 (1.5)	1.0 (3.7)	1.5 (5.6)
0.20	2.3 (65)	6.0 (160)	11 (310)	0.6 (2.2)	1.4 (5.2)	2.0 (7.5)
0.30	3.4 (96)	9.0 (250)	16 (450)	0.9 (3.4)	2.1 (7.9)	3.0 (11)
0.35	4.0 (110)	10 (280)	19 (530)	1.1 (4.1)	2.4 (9.0)	3.5 (13)
0.50	5.6 (150)	15 (420)	27 (760)	1.6 (6.0)	3.5 (13)	5.0 (18)
0.80	9.0 (250)	24 (670)	42 (1100)	2.5 (9.4)	5.6 (21)	8.0 (30)
1.20	14 (390)	36 (1000)	64 (1800)	3.8 (14)	8.5 (32)	12 (45)
1.50	17 (480)	45 (1200)	80 (2200)	4.7 (17)	11 (41)	15 (56)
2.00	22 (620)	60 (1600)	100 (2800)	6.3 (23)	14 (52)	20 (75)
2.60	29 (820)	78 (2200)	140 (3900)	8.2 (31)	18 (68)	26 (98)
3.00	34 (960)	90 (2500)	160 (4500)	9.5 (35)	21 (79)	30 (110)
3.80	43 (1200)	110 (3100)	200 (5600)	12 (45)	27 (100)	38 (140)
4.60	52 (1400)	140 (3900)	240 (6700)	15 (56)	33 (120)	46 (170)
6.30	71 (2000)	190 (5300)	330 (9300)	20 (75)	45 (170)	63 (230)
10.0	110 (3150)	290 (8400)	510 (14000)	31 (110)	72 (280)	98 (360)
12.0	130 (3600)	360 (10000)	640 (18000)	38 (140)	85 (320)	120 (450)

## XYF — QFT Split-type instrument ball valve

### ● 订购信息及选型 Order information & selection



1. 材料 Material		
S	=	碳钢 Carbon steel
B	=	黄铜 Brass
M	=	合金 Alloy 400
SS	=	316不锈钢 Stainless steel
SS2	=	304不锈钢 Stainless steel
SS3	=	304L不锈钢 Stainless steel
SS4	=	316L不锈钢 Stainless steel

2. QFT表示分体式 represents split type

3. 表示结构形式 represents structure type		
1	=	直通 straight type
2	=	角式 angle type
3	=	三通 3-way
9	=	蒸汽式 steam type
10	=	闭锁式 Closedown type
11	=	圆体式 Round type
12	=	方形式 Square type
13	=	对夹式 Wafer type

4. 表示连接方式 Represents connecting type		
SK	=	双卡套 double ferrules
DK	=	单卡双刃 two-edged with one ferrule
LWF	=	内螺纹 female
LWM	=	外螺纹 male
FM	=	内外螺纹 female-male
SKF	=	卡套内螺纹 female with ferrule
SKM	=	卡套外螺纹 male with ferrule
CHF	=	承插焊 socket weld
CH	=	对焊 butt weld
FH	=	法兰 flange

5. 配管尺寸 Tube size			
英制 British in		公制 Metric mm	
1	= 1/16	2	= 2
2	= 1/8	3	= 3
3	= 3/16	4	= 4
4	= 1/4	6	= 6
5	= 5/16	8	= 8
6	= 3/8	10	= 10
8	= 1/2	12	= 12
10	= 5/8	14	= 14
12	= 3/4	16	= 16
14	= 7/8	18	= 18
16	= 1	20	= 20
18	= 1-1/8	22	= 22
20	= 1-1/4	25	= 25
24	= 1-1/2	28	= 28
32	= 2	32	= 32
		38	= 38
		42	= 42

#### 说明: Description

- 1、NPT螺纹与英制配管尺寸相同。  
OD tube size of NPT threads is the same as that of British threads.
- 2、ISO螺纹在尺寸后加G、R、M等。  
Add G, R or M to ISO thread sizes as suffix.
- 3、配管尺寸为标准尺寸，如需特殊材料、非标螺纹及配管的另加说明。  
Tube size is the standard one. Please make a note if the special material or threads are needed.

### ● 订货号样例 代表具有以下特点的QFT系列阀门

Example for order information (represents QFT valve with the following features)

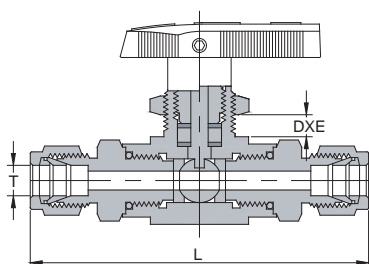
SS-QFT3-LWF-8

- 316不锈钢材料 SS
- 分体式系列 Split-type
- 3通阀门 3-way valve
- 内螺纹端接 female end connection
- 尺寸1/2NPT size

B-QFT1-SK-6

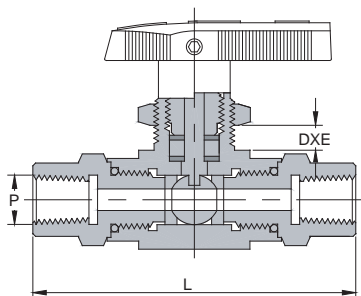
- 黄铜材料 brass
- 分体式系列 split-type
- 直通阀门 straight valve
- 双卡套端接 end connection with double ferrules
- 尺寸为3/8in size

## ● -QFT1-SK型卡套直通球阀 Straight type valve with ferrules



基本订货号 Order information	T OD	L		D×E (mm)	孔径Hole Diameter	
		英寸 (in)	毫米 (mm)		英寸 (in)	毫米 (mm)
-QFT1-SK-2	1/8in	2.83	72	16×6.4	0.093	2.4
-QFT1-SK-4	1/4in	3.31	84	16×6.4	0.170	4.2
-QFT1-SK-6	3/8in	3.78	96	20×6.4	0.250	6.4
-QFT1-SK-8	1/2in	4.09	104	23×9.7	0.410	10.3
-QFT1-SK-12	3/4in	4.41	112	23×9.7	0.410	10.3
-QFT1-SK-3mm	3mm	2.83	72	16×6.4	0.093	2.4
-QFT1-SK-4mm	4mm	2.83	72	16×6.4	0.093	2.4
-QFT1-SK-6mm	6mm	3.31	84	16×6.4	0.170	4.2
-QFT1-SK-8mm	8mm	3.78	96	16×6.4	0.170	4.2
-QFT1-SK-10mm	10mm	3.78	96	20×6.4	0.250	6.4
-QFT1-SK-12mm	12mm	4.09	104	20×6.4	0.250	6.4
-QFT1-SK-14mm	14mm	4.09	104	23×9.7	0.410	10.3
-QFT1-SK-16mm	16mm	4.09	104	23×9.7	0.410	10.3
-QFT1-SK-18mm	18mm	4.41	112	23×9.7	0.410	10.3
-QFT1-SK-20mm	20mm	4.41	112	23×9.7	0.410	10.3

## ● -QFT1-LWF型内螺纹直通球阀 Female straight type ball valve



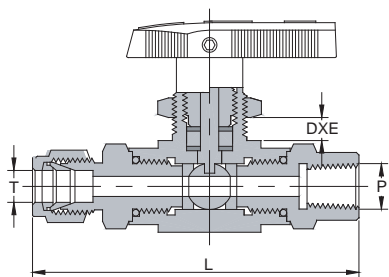
基本订货号 Order information	P	L		D×E (mm)	孔径Hole Diameter	
		英寸 (in)	毫米 (mm)		英寸 (in)	毫米 (mm)
-QFT1-LWF-2	NPT 1/8	2.52	64	16×6.4	0.093	2.4
-QFT1-LWF-4	NPT 1/4	2.99	76	16×6.4	0.170	4.2
-QFT1-LWF-6	NPT 3/8	3.70	94	20×6.4	0.250	6.4
-QFT1-LWF-8	NPT 1/2	4.02	102	23×9.7	0.410	10.3
-QFT1-LWF-R2	RT 1/8	2.52	64	16×6.4	0.093	2.4
-QFT1-LWF-R4	RT 1/4	2.99	76	16×6.4	0.170	4.2
-QFT1-LWF-R6	RT 3/8	3.70	94	20×6.4	0.250	6.4
-QFT1-LWF-R8	RT 1/2	4.02	102	23×9.7	0.410	10.3
-QFT1-LWF-G2	G1/8	2.52	64	16×6.4	0.093	2.4
-QFT1-LWF-G4	G1/4	2.99	76	16×6.4	0.170	4.2
-QFT1-LWF-G6	G3/8	3.70	94	20×6.4	0.250	6.4
-QFT1-LWF-G8	G1/2	4.02	102	23×9.7	0.410	10.3
-QFT1-LWF-M10	M10×1	2.52	64	16×6.4	0.093	2.4
-QFT1-LWF-M14	M14×1.5	2.99	76	16×6.4	0.170	4.2
-QFT1-LWF-M16	M16×1.5	3.23	82	20×6.4	0.250	6.4
-QFT1-LWF-M18	M18×1.5	3.70	94	23×9.7	0.410	10.3
-QFT1-LWF-M20	M20×1.5	3.94	100	23×9.7	0.410	10.3

# XYF-QFT系列分体式仪表球阀



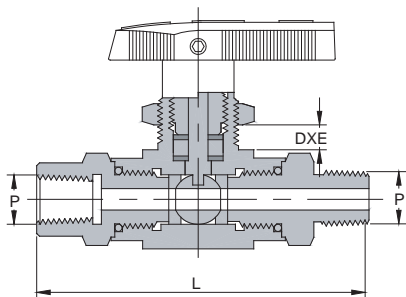
## XYF — QFT Split-type instrument ball valve

### ● -QFT1-SKF型卡套内螺纹直通球阀 Female straight type ball valve with ferrules



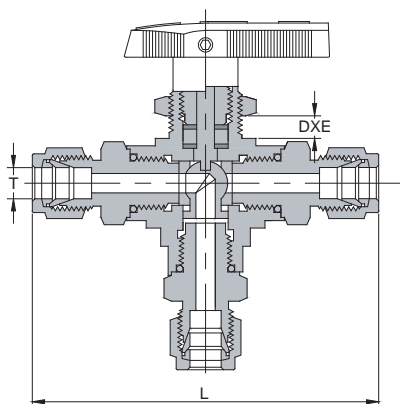
基本订货号 Order information	T OD	P	L		D × E (mm)	孔径Hole Diameter	
			英寸 (in)	毫米 (mm)		英寸 (in)	毫米 (mm)
-QFT1-SKF-2-2	1/8in	NPT1/8	2.68	68	16 × 6.4	0.093	2.4
-QFT1-SKF-4-4	1/4in	NPT1/4	3.15	80	16 × 6.4	0.170	4.2
-QFT1-SKF-6-6	3/8in	NPT3/8	3.74	95	20 × 6.4	0.250	6.4
-QFT1-SKF-8-8	1/2in	NPT1/2	4.06	103	23 × 9.7	0.410	10.3
-QFT1-SKF-2-R2	1/8in	R1/8	2.68	68	16 × 6.4	0.093	2.4
-QFT1-SKF-4-R4	1/4in	R1/4	3.15	80	16 × 6.4	0.170	4.2
-QFT1-SKF-6-R6	3/8in	R3/8	3.74	95	20 × 6.4	0.250	6.4
-QFT1-SKF-8-R8	1/2in	R1/2	4.06	103	23 × 9.7	0.410	10.3
-QFT1-SKF-3mm-2	3mm	NPT1/8	2.68	68	16 × 6.4	0.093	2.4
-QFT1-SKF-6mm-4	6mm	NPT1/4	3.15	80	16 × 6.4	0.170	4.2
-QFT1-SKF-8mm-6	8mm	NPT3/8	3.74	95	20 × 6.4	0.250	6.4
-QFT1-SKF-10mm-8	10mm	NPT1/2	4.06	103	23 × 9.7	0.410	10.3
-QFT1-SKF-3mm-G2	3mm	G1/8	2.68	68	16 × 6.4	0.093	2.4
-QFT1-SKF-6mm-G4	6mm	G1/4	3.15	80	16 × 6.4	0.170	4.2
-QFT1-SKF-8mm-G6	8mm	G3/8	3.74	95	20 × 6.4	0.250	6.4
-QFT1-SKF-10mm-G8	10mm	G1/2	4.06	103	23 × 9.7	0.410	10.3

### ● -QFT1-FM型内外螺纹直通球阀 Female-male straight type ball valve



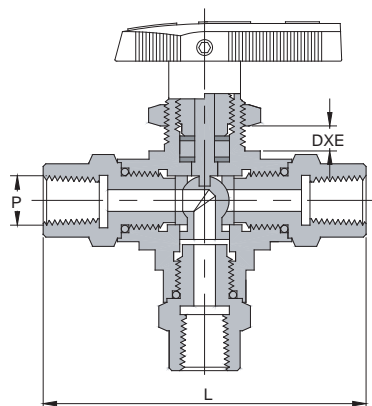
基本订货号 Order information	P	L		D × E (mm)	孔径Hole Diameter	
		英寸 (in)	毫米 (mm)		英寸 (in)	毫米 (mm)
-QFT1-FM-2-2	NPT1/8	2.52	64	16 × 6.4	0.093	2.4
-QFT1-FM-4-4	NPT1/4	2.99	76	16 × 6.4	0.170	4.2
-QFT1-FM-6-6	NPT3/8	3.70	94	20 × 6.4	0.250	6.4
-QFT1-FM-8-8	NPT1/2	4.02	102	23 × 9.7	0.410	10.3
-QFT1-FM-2R-R2	R1/8	2.52	64	16 × 6.4	0.093	2.4
-QFT1-FM-4R-R4	R1/4	2.99	76	16 × 6.4	0.170	4.2
-QFT1-FM-6R-R6	R3/8	3.70	94	20 × 6.4	0.250	6.4
-QFT1-FM-8R-R8	R1/2	4.02	102	23 × 9.7	0.410	10.3
-QFT1-FM-2G-G2	G1/8	2.52	64	16 × 6.4	0.093	2.4
-QFT1-FM-4G-G4	G1/4	2.99	76	16 × 6.4	0.170	4.2
-QFT1-FM-6G-G6	G3/8	3.70	94	20 × 6.4	0.250	6.4
-QFT1-FM-8G-G8	G1/2	4.02	102	23 × 9.7	0.410	10.3
-QFT1-FM-10M-M10	M10 × 1	2.52	64	16 × 6.4	0.093	2.4
-QFT1-FM-14M-M14	M14 × 1.5	2.99	76	16 × 6.4	0.170	4.2
-QFT1-FM-16M-M16	M16 × 1.5	3.23	82	20 × 6.4	0.250	6.4
-QFT1-FM-18M-M18	M18 × 1.5	3.70	94	23 × 9.7	0.410	10.3
-QFT1-FM-20M-M20	M20 × 1.5	4.02	102	23 × 9.7	0.410	10.3

## ● -QFT3-SK型卡套三通球阀 3-way ball valve with ferrules



基本订货号 Order information	T	L		D×E (mm)	孔径Hole Diameter	
	OD	英寸 (in)	毫米 (mm)		英寸 (in)	毫米 (mm)
-QFT3-SK-2	1/8in	2.83	72	16×6.4	0.093	2.4
-QFT3-SK-4	1/4in	3.31	84	16×6.4	0.170	4.2
-QFT3-SK-6	3/8in	3.78	96	20×6.4	0.250	6.4
-QFT3-SK-8	1/2in	4.09	104	23×9.7	0.410	10.3
-QFT3-SK-12	3/4in	4.41	112	23×9.7	0.410	10.3
-QFT3-SK-3mm	3mm	2.83	72	16×6.4	0.093	2.4
-QFT3-SK-4mm	4mm	2.83	72	16×6.4	0.093	2.4
-QFT3-SK-6mm	6mm	3.31	84	16×6.4	0.170	4.2
-QFT3-SK-8mm	8mm	3.78	96	16×6.4	0.170	4.2
-QFT3-SK-10mm	10mm	3.78	96	20×6.4	0.250	6.4
-QFT3-SK-12mm	12mm	4.09	104	20×6.4	0.250	6.4
-QFT3-SK-14mm	14mm	4.09	104	23×9.7	0.410	10.3
-QFT3-SK-16mm	16mm	4.09	104	23×9.7	0.410	10.3
-QFT3-SK-18mm	18mm	4.41	112	23×9.7	0.410	10.3
-QFT3-SK-20mm	20mm	4.41	112	23×9.7	0.410	10.3

## ● -QFT3-LWF型内螺纹三通球阀 3-way female valve

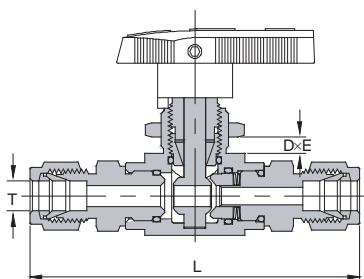


基本订货号 Order information	P	L		D×E (mm)	孔径Hole Diameter	
		英寸 (in)	毫米 (mm)		英寸 (in)	毫米 (mm)
-QFT3-LWF-2	NPT1/8	2.52	64	16×6.4	0.093	2.4
-QFT3-LWF-4	NPT1/4	2.99	76	16×6.4	0.170	4.2
-QFT3-LWF-6	NPT3/8	3.70	94	20×6.4	0.250	6.4
-QFT3-LWF-8	NPT1/2	4.02	102	23×9.7	0.410	10.3
-QFT3-LWF-R2	R1/8	2.52	64	16×6.4	0.093	2.4
-QFT3-LWF-R4	R1/4	2.99	76	16×6.4	0.170	4.2
-QFT3-LWF-R6	R3/8	3.70	94	20×6.4	0.250	6.4
-QFT3-LWF-R8	R1/2	4.02	102	23×9.7	0.410	10.3
-QFT3-LWF-G2	G1/8	2.52	64	16×6.4	0.093	2.4
-QFT3-LWF-G4	G1/4	2.99	76	16×6.4	0.170	4.2
-QFT3-LWF-G6	G3/8	3.70	94	20×6.4	0.250	6.4
-QFT3-LWF-G8	G1/2	4.02	102	23×9.7	0.410	10.3
-QFT3-LWF-M10	M10×1	2.52	64	16×6.4	0.093	2.4
-QFT3-LWF-M14	M14×1.5	2.99	76	16×6.4	0.170	4.2
-QFT3-LWF-M16	M16×1.5	3.23	82	20×6.4	0.250	6.4
-QFT3-LWF-M18	M18×1.5	3.70	94	23×9.7	0.410	10.3
-QFT3-LWF-M20	M20×1.5	3.94	100	23×9.7	0.410	10.3



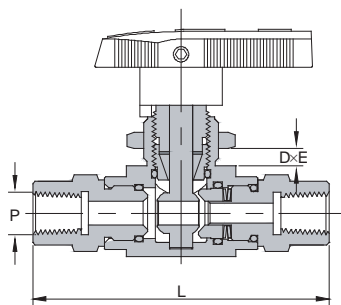
## XYF — QFT Split-type instrument ball valve

### ● -QFT9-SK型卡套蒸汽球阀 Steam ball valve with ferrules



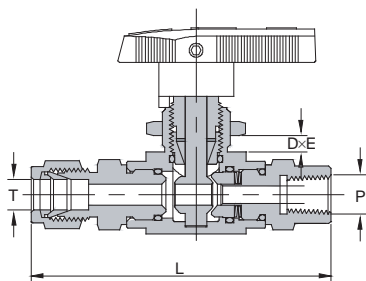
基本订货号 Order information	T OD	L		D × E (mm)	孔径Hole Diameter	
		英寸 (in)	毫米 (mm)		英寸 (in)	毫米 (mm)
-QFT9-SK-2	1/8in	2.83	72	16 × 6.4	0.093	2.4
-QFT9-SK-4	1/4in	3.31	84	16 × 6.4	0.170	4.2
-QFT9-SK-6	3/8in	3.78	96	20 × 6.4	0.250	6.4
-QFT9-SK-8	1/2in	4.09	104	23 × 9.7	0.410	10.3
-QFT9-SK-12	3/4in	4.41	112	23 × 9.7	0.410	10.3
-QFT9-SK-3mm	3mm	2.83	72	16 × 6.4	0.093	2.4
-QFT9-SK-4mm	4mm	2.83	72	16 × 6.4	0.093	2.4
-QFT9-SK-6mm	6mm	3.31	84	16 × 6.4	0.170	4.2
-QFT9-SK-8mm	8mm	3.78	96	16 × 6.4	0.170	4.2
-QFT9-SK-10mm	10mm	3.78	96	20 × 6.4	0.250	6.4
-QFT9-SK-12mm	12mm	4.09	104	20 × 6.4	0.250	6.4
-QFT9-SK-14mm	14mm	4.09	104	23 × 9.7	0.410	10.3
-QFT9-SK-16mm	16mm	4.09	104	23 × 9.7	0.410	10.3
-QFT9-SK-18mm	18mm	4.41	112	23 × 9.7	0.410	10.3
-QFT9-SK-20mm	20mm	4.41	112	23 × 9.7	0.410	10.3

### ● -QFT9-LWF型内螺纹蒸汽球阀 Female steam ball valve



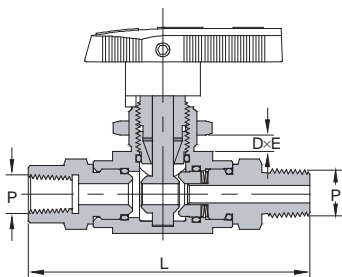
基本订货号 Order information	P	L		D × E (mm)	孔径Hole Diameter	
		英寸 (in)	毫米 (mm)		英寸 (in)	毫米 (mm)
-QFT9-LWF-2	NPT1/8	2.52	64	16 × 6.4	0.093	2.4
-QFT9-LWF-4	NPT1/4	2.99	76	16 × 6.4	0.170	4.2
-QFT9-LWF-6	NPT3/8	3.70	94	20 × 6.4	0.250	6.4
-QFT9-LWF-8	NPT1/2	4.02	102	23 × 9.7	0.410	10.3
-QFT9-LWF-R2	R1/8	2.52	64	16 × 6.4	0.093	2.4
-QFT9-LWF-R4	R1/4	2.99	76	16 × 6.4	0.170	4.2
-QFT9-LWF-R6	R3/8	3.70	94	20 × 6.4	0.250	6.4
-QFT9-LWF-R8	R1/2	4.02	102	23 × 9.7	0.410	10.3
-QFT9-LWF-G2	G1/8	2.52	64	16 × 6.4	0.093	2.4
-QFT9-LWF-G4	G1/4	2.99	76	16 × 6.4	0.170	4.2
-QFT9-LWF-G6	G3/8	3.70	94	20 × 6.4	0.250	6.4
-QFT9-LWF-G8	G1/2	4.02	102	23 × 9.7	0.410	10.3
-QFT9-LWF-M10	M10 × 1	2.52	64	16 × 6.4	0.093	2.4
-QFT9-LWF-M14	M14 × 1.5	2.99	76	16 × 6.4	0.170	4.2
-QFT9-LWF-M16	M16 × 1.5	3.23	82	20 × 6.4	0.250	6.4
-QFT9-LWF-M18	M18 × 1.5	3.70	94	23 × 9.7	0.410	10.3
-QFT9-LWF-20	M20 × 1.5	3.94	100	23 × 9.7	0.410	10.3

● -QFT9-SKF型卡套内螺纹蒸汽球阀 Female steam ball valve with ferrules



基本订货号 Order information	T OD	P	L		D × E (mm)	孔径Hole Diameter	
			英寸 (in)	毫米 (mm)		英寸 (in)	毫米 (mm)
-QFT9-SKF-2-2	1/8in	NPT1/8	2.68	68	16 × 6.4	0.093	2.4
-QFT9-SKF-4-4	1/4in	NPT1/4	3.15	80	16 × 6.4	0.170	4.2
-QFT9-SKF-6-6	3/8in	NPT3/8	3.74	95	20 × 6.4	0.250	6.4
-QFT9-SKF-8-8	1/2in	NPT1/2	4.06	103	23 × 9.7	0.410	10.3
-QFT9-SKF-2-R2	1/8in	R1/8	2.68	68	16 × 6.4	0.093	2.4
-QFT9-SKF-4-R4	1/4in	R1/4	3.15	80	16 × 6.4	0.170	4.2
-QFT9-SKF-6-R6	3/8in	R3/8	3.74	95	20 × 6.4	0.250	6.4
-QFT9-SKF-8-R8	1/2in	R1/2	4.06	103	23 × 9.7	0.410	10.3
-QFT9-SKF-3mm-2	3mm	NPT1/8	2.68	68	16 × 6.4	0.093	2.4
-QFT9-SKF-6mm-4	6mm	NPT1/4	3.15	80	16 × 6.4	0.170	4.2
-QFT9-SKF-8mm-6	8mm	NPT3/8	3.74	95	20 × 6.4	0.250	6.4
-QFT9-SKF-10mm-8	10mm	NPT1/2	4.06	103	23 × 9.7	0.410	10.3
-QFT9-SKF-3mm-G2	3mm	G1/8	2.68	68	16 × 6.4	0.093	2.4
-QFT9-SKF-6mm-G4	6mm	G1/4	3.15	80	16 × 6.4	0.170	4.2
-QFT9-SKF-8mm-G6	8mm	G3/8	3.74	95	20 × 6.4	0.250	6.4
-QFT9-SKF-10mm-G8	10mm	G1/2	4.06	103	23 × 9.7	0.410	10.3

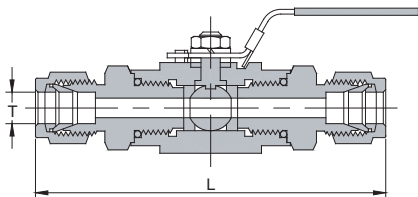
● -QFT9-FM型内外螺纹蒸汽球阀 Female-male steam ball valve



基本订货号 Order information	P	L		D × E (mm)	孔径Hole Diameter	
		英寸 (in)	毫米 (mm)		英寸 (in)	毫米 (mm)
-QFT9-FM-2-2	NPT1/8	2.52	64	16 × 6.4	0.093	2.4
-QFT9-FM-4-4	NPT1/4	2.99	76	16 × 6.4	0.170	4.2
-QFT9-FM-6-6	NPT3/8	3.70	94	20 × 6.4	0.250	6.4
-QFT9-FM-8-8	NPT1/2	4.02	102	23 × 9.7	0.410	10.3
-QFT9-FM-R2-R2	R1/8	2.52	64	16 × 6.4	0.093	2.4
-QFT9-FM-R4-R4	R1/4	2.99	76	16 × 6.4	0.170	4.2
-QFT9-FM-R6-R6	R3/8	3.70	94	20 × 6.4	0.250	6.4
-QFT9-FM-R8-R8	R1/2	4.02	102	23 × 9.7	0.410	10.3
-QFT9-FM-G2-G2	G1/8	2.52	64	16 × 6.4	0.093	2.4
-QFT9-FM-G4-G4	G1/4	2.99	76	16 × 6.4	0.170	4.2
-QFT9-FM-G6-G6	G3/8	3.70	94	20 × 6.4	0.250	6.4
-QFT9-FM-G8-G8	G1/2	4.02	102	23 × 9.7	0.410	10.3
-QFT9-FM-M10-M10	M10 × 1	2.52	64	16 × 6.4	0.093	2.4
-QFT9-FM-M14-M14	M14 × 1.5	2.99	76	16 × 6.4	0.170	4.2
-QFT9-FM-M16-M16	M16 × 1.5	3.23	82	20 × 6.4	0.250	6.4
-QFT9-FM-M18-M18	M18 × 1.5	3.70	94	23 × 9.7	0.410	10.3
-QFT3-FM-M20-M20	M20 × 1.5	4.02	102	23 × 9.7	0.410	10.3

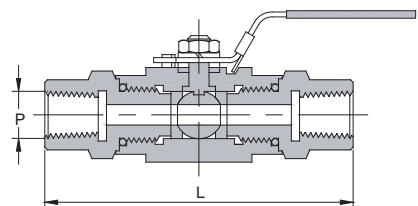
## XYF — QFT Split-type instrument ball valve

### ● -QFT10-SK型卡套闭锁球阀 Closedown ball valve with ferrules



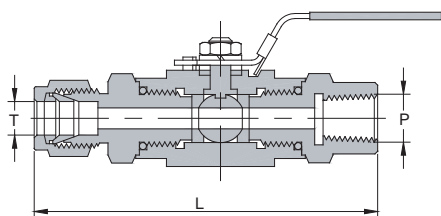
基本订货号 Order information	T	L		孔径Hole Diameter	
		英寸 (in)	毫米 (mm)	英寸 (in)	毫米 (mm)
-QFT10-SK-4	1/4in	3.54	90	0.20	5
-QFT10-SK-6	3/8in	3.54	90	0.28	7
-QFT10-SK-8	1/2in	3.74	95	0.35	9
-QFT10-SK-12	3/4in	4.41	112	0.47	12
-QFT10-SK-16	1in	5.12	130	0.59	15
-QFT10-SK-6mm	6mm	3.54	90	0.20	5
-QFT10-SK-8mm	8mm	3.54	90	0.28	7
-QFT10-SK-10mm	10mm	3.74	95	0.35	9
-QFT10-SK-12mm	12mm	3.86	98	0.47	12
-QFT10-SK-14mm	14mm	3.86	98	0.47	12

### ● -QFT10-LWF型内螺纹闭锁球阀 Female closedown ball valve



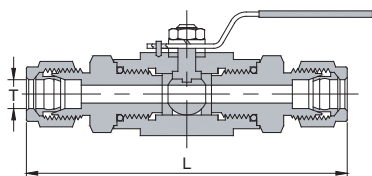
基本订货号 Order information	P	L		孔径Hole Diameter	
		英寸 (in)	毫米 (mm)	英寸 (in)	毫米 (mm)
-QFT10-LWF-4	NPT1/4	1.97	50	0.20	5
-QFT10-LWF-6	NPT3/8	2.36	60	0.28	7
-QFT10-LWF-8	NPT1/2	2.95	75	0.35	9
-QFT10-LWF-R4	R1/4	1.97	50	0.20	5
-QFT10-LWF-R6	R3/8	2.36	60	0.28	7
-QFT10-LWF-R8	R1/2	2.95	75	0.35	9

### ● -QFT10-SKF型卡套内螺纹闭锁球阀 Female closedown ball valve with ferrules



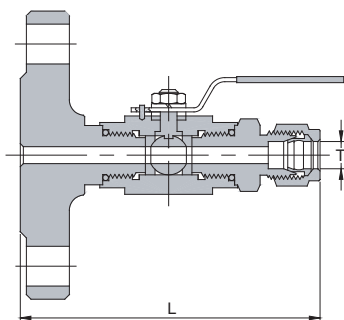
基本订货号 Order information	T OD	P	L		孔径Hole Diameter	
			英寸 (in)	毫米 (mm)	英寸 (in)	毫米 (mm)
-QFT10-SKF-4-4	1/4in	NPT1/4	2.76	70	0.20	5
-QFT10-SKF-6-6	3/8in	NPT3/8	2.99	76	0.28	7
-QFT10-SKF-8-8	1/2in	NPT1/2	3.35	85	0.35	9
-QFT10-SKF-4-R4	1/4in	R1/4	2.91	74	0.20	5
-QFT10-SKF-6-R6	3/8in	R3/8	2.99	76	0.28	7
-QFT10-SKF-8-R8	1/2in	R1/2	3.35	85	0.35	9
-QFT10-SKF-6mm-4	6mm	NPT1/4	2.76	70	0.20	5
-QFT10-SKF-8mm-6	8mm	NPT3/8	2.99	76	0.28	7
-QFT10-SKF-10mm-8	10mm	NPT1/2	3.15	80	0.35	9
-QFT10-SKF-12mm-8	12mm	NPT1/2	3.23	82	0.35	9
-QFT10-SKF-14mm-8	14mm	NPT1/2	3.35	85	0.35	9

● -QFT11-DKA型卡套圆体球阀(原QG .Y1型)  
Round-type ball valve for pressure tapping(Formal QG.Y1)



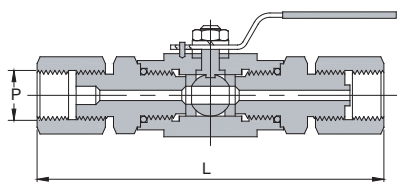
基本订货号 Order information	T	L		DN	PN
		英寸 (in)	毫米 (mm)		
-QFT11-DKA-8mm	8mm	4.96	126	6	2.5Mpa
-QFT11-DKA-10mm	10mm	4.96	126	8	2.5Mpa
-QFT11-DKA-12mm	12mm	5.12	130	10	2.5Mpa
-QFT11-DKA-14mm	14mm	5.12	130	10	2.5Mpa

● -QFT11-DK8型取压圆体球阀(原QG .AY1型)  
Round-type ball valve for pressure tapping(Formal QG .AY1)



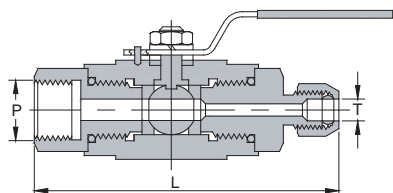
基本订货号 Order information	T	L		DN	PN
		英寸 (in)	毫米 (mm)		
-QFT11-DKB-8mm	8mm	3.98	101	6	2.5Mpa
-QFT11-DKB-10mm	10mm	3.98	101	8	2.5Mpa
-QFT11-DKB-12mm	12mm	4.13	105	10	2.5Mpa
-QFT11-DKB-14mm	14mm	4.13	105	10	2.5Mpa

● -QFT11-LWFC型压力表圆体球阀(原QG .M1型)  
Gauge round-type ball valve(Formal QG .M1)



基本订货号 Order information	P	L		DN	PN
		英寸 (in)	毫米 (mm)		
-QFT11-LWFC-M20	M20 x 1.5	5.71	145	4	2.5Mpa
-QFT11-LWFC-G8	G1/2	5.71	145	4	2.5Mpa

● -QFT11-SKFD型气源圆体球阀(原QG .AY1型)  
Air-supply round-type ball valve(Formal QG .AY1)



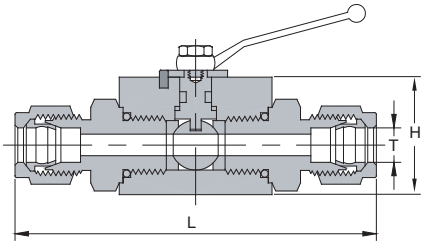
基本订货号 Order information	T	P	L		DN	PN
	英寸 (in)	英寸 (in)	英寸 (in)	毫米 (mm)		
-QFT11-SKFD-6mm-G8	6mm	G1/2	3.54	90	4	1.0Mpa
-QFT11-SKFD-8mm-G8	8mm	G1/2	3.54	90	6	1.0Mpa
-QFT11-SKFD-10mm-G8	10mm	G1/2	3.74	95	8	1.0Mpa
-QFT11-SKFD-12mm-G8	12mm	G1/2	3.74	95	10	1.0Mpa

# XYF-QFT系列分体式仪表球阀



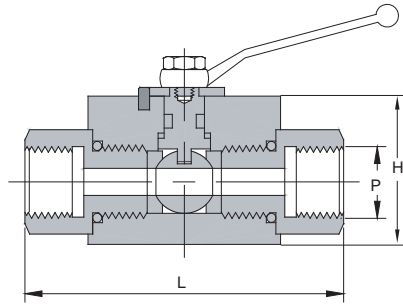
## XYF — QFT Split-type instrument ball valve

### ● -QFT12-DK型卡套方型高压球阀 Square-type ball valve with ferrules



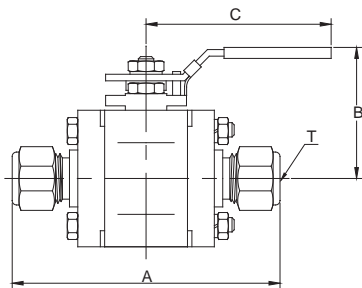
基本订货号 Order information	DN (mm)	D0		L		B		H		PN (bar)
		英寸 (in)	毫米 (mm)	英寸 (in)	毫米 (mm)	英寸 (in)	毫米 (mm)	英寸 (in)	毫米 (mm)	
-QFT12-DK-6mm	4	0.24	6	2.64	67	1.02	26	1.69	43	315
-QFT12-DK-8mm	6	0.31	8	2.64	67	1.02	26	1.69	43	315
-QFT12-DK-10mm	8	0.39	10	2.80	71	1.26	32	1.89	48	315
-QFT12-DK-12mm	10	0.47	12	2.91	74	1.26	32	1.93	49	315
-QFT12-DK-14mm	10	0.55	14	3.15	80	1.26	32	1.93	49	315
-QFT12-DK-16mm	13	0.63	16	3.31	84	1.38	35	2.01	51	250
-QFT12-DK-18mm	16	0.71	18	3.31	84	1.50	38	2.44	62	250
-QFT12-DK-20mm	16	0.79	20	3.54	90	1.50	38	2.44	62	250
-QFT12-DK-22mm	20	0.87	22	3.94	100	1.89	48	2.87	73	250
-QFT12-DK-25mm	20	0.98	25	4.02	102	1.89	48	2.87	73	250
-QFT12-DK-28mm	25	1.10	28	4.25	108	2.36	60	2.99	76	250
-QFT12-DK-32mm	25	1.26	32	4.41	112	2.36	60	2.99	76	250

### ● -QFT12-LWF型内螺纹方型高压球阀 Female square-type ball valve



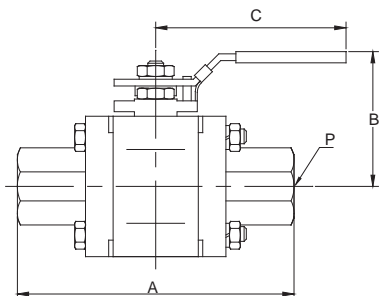
基本订货号 Order information	DN (mm)	P	L		B		H		PN (bar)
			英寸 (in)	毫米 (mm)	英寸 (in)	毫米 (mm)	英寸 (in)	毫米 (mm)	
-QFT12-LWF-G2	4	G1/8	2.72	69	1.02	26	1.69	43	500
-QFT12-LWF-G4	6	G1/4	2.72	69	1.02	26	1.69	43	500
-QFT12-LWF-G6	10	G3/8	2.87	73	1.26	32	1.93	49	500
-QFT12-LWF-G8	13	G1/2	3.35	85	1.50	38	2.01	51	500
-QFT12-LWF-G12	20	G3/4	3.78	96	1.93	49	2.87	73	400
-QFT12-LWF-G16	25	G1	4.45	113	2.36	60	2.99	76	350
-QFT12-LWF-G20	32	G1 1/4	4.72	120	2.99	76	4.02	102	300
-QFT12-LWF-G24	40	G1 1/2	5.31	135	3.35	85	4.33	110	210
-QFT12-LWF-2	4	NPT1/8	2.72	69	1.02	26	1.69	43	500
-QFT12-LWF-4	6	NPT1/4	2.72	69	1.02	26	1.69	43	500
-QFT12-LWF-6	10	NPT3/8	2.87	73	1.26	32	2.01	51	400
-QFT12-LWF-8	13	NPT1/2	3.62	92	1.50	38	2.44	62	350
-QFT12-LWF-12	20	NPT3/4	3.82	97	1.93	49	2.87	73	350
-QFT12-LWF-16	25	NPT1	4.45	113	2.36	60	2.99	76	300
-QFT12-LWF-20	32	NPT1 1/4	4.53	115	2.99	76	4.09	104	300
-QFT12-LWF-24	40	NPT1 1/2	5.31	135	3.35	85	4.33	110	210

### ● -QFT13-SK型卡套对夹球阀 Wafer ball valve with ferrules



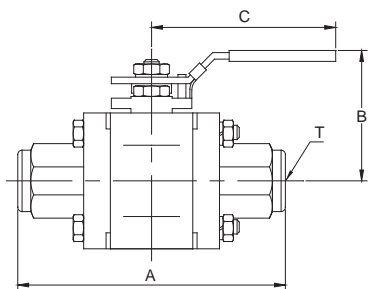
基本订货号 Order information	DN (mm)	T (mm)	A		B		C		Cv
			英寸 (in)	毫米 (mm)	英寸 (in)	毫米 (mm)	英寸 (in)	毫米 (mm)	
-QFT13-SK-4	4.8	1/4	2.28	58	2.24	57	4.80	122	1.2
-QFT13-SK-6	7.1	3/8	2.36	60	2.24	57	4.80	122	3.8
-QFT13-SK-8	10.5	1/2	2.68	68	2.24	57	4.80	122	7.6
-QFT13-SK-12	13	3/4	2.83	72	2.36	60	4.80	122	14
-QFT13-SK-16	19.5	1	4.80	122	2.95	75	5.94	151	24
-QFT13-SK-6mm	4.8	6mm	2.28	58	2.24	57	4.80	122	1.2
-QFT13-SK-10mm	7.1	10mm	2.36	60	2.24	57	4.80	122	3.8
-QFT13-SK-12mm	10.5	12mm	2.68	68	2.24	57	4.80	122	7.6
-QFT13-SK-20mm	13	20mm	2.83	72	2.36	60	4.80	122	14
-QFT13-SK-25mm	19.5	25mm	4.80	122	2.95	75	5.94	151	24

## ● -QFT13-LWF型内螺纹对夹球阀 Female wafer ball valve



基本订货号 Order information	DN (mm)	P (mm)	A		B		C		Cv
			英寸 (in)	毫米 (mm)	英寸 (in)	毫米 (mm)	英寸 (in)	毫米 (mm)	
-QFT13-LWF-4	10.5	NPT1/4	2.58	65.6	0.81	20.6	4.80	122	5.1
-QFT13-LWF-6	10.5	NPT3/8	2.70	68.6	0.81	20.6	4.80	122	5.1
-QFT13-LWF-8	10.5	NPT1/2	2.90	73.6	0.81	20.6	4.80	122	5.1
-QFT13-LWF-12	13	NPT3/4	3.06	77.6	0.97	24.6	4.80	122	14
-QFT13-LWF-16	19.5	NPT1	4.80	121.9	1.25	31.8	5.94	151	24
-QFT13-LWF-R4	10.5	R1/4	2.58	65.6	0.81	20.6	4.80	122	5.1
-QFT13-LWF-R6	10.5	R3/8	2.70	68.6	0.81	20.6	4.80	122	5.1
-QFT13-LWF-R8	10.5	R1/2	2.90	73.6	0.81	20.6	4.80	122	5.1
-QFT13-LWF-R12	13	R3/4	3.06	77.6	0.97	24.6	4.80	122	14
-QFT13-LWF-R16	19.5	R1	4.80	121.9	1.25	31.8	5.94	151	24
-QFT13-LWF-G4	10.5	G1/4	2.58	65.6	0.81	20.6	4.80	122	5.1
-QFT13-LWF-G6	10.5	G3/8	2.70	68.6	0.81	20.6	4.80	122	5.1
-QFT13-LWF-G8	10.5	G1/2	2.90	73.6	0.81	20.6	4.80	122	5.1
-QFT13-LWF-G12	13	G3/4	3.06	77.6	0.97	24.6	4.80	122	14
-QFT13-LWF-G16	19.5	G1	4.80	121.9	1.25	31.8	5.94	151	24

## ● -QFT13-CHF型承插焊对夹球阀 Socket welded wafer ball valve



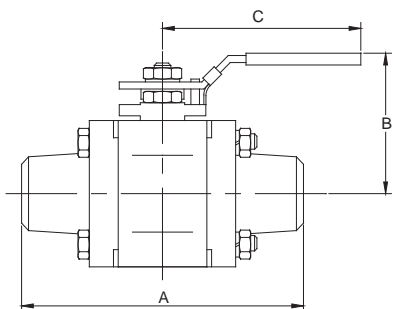
基本订货号 Order information	DN (mm)	T (in/mm)	A		B		C		Cv
			英寸 (in)	毫米 (mm)	英寸 (in)	毫米 (mm)	英寸 (in)	毫米 (mm)	
-QFT13-CHF-4	4.8	1/4	2.58	65.6	0.81	20.6	4.80	122	1.2
-QFT13-CHF-6	7.1	3/8	2.70	68.6	0.81	20.6	4.80	122	3.8
-QFT13-CHF-8	10.5	1/2	2.90	73.6	0.81	20.6	4.80	122	7.6
-QFT13-CHF-12	13	3/4	3.06	77.6	0.97	24.6	4.80	122	14
-QFT13-CHF-16	19.5	1	4.80	121.9	1.25	31.8	5.94	151	24
-QFT13-CHF-6mm	4.8	6mm	2.58	65.6	0.81	20.6	4.80	122	1.2
-QFT13-CHF-8mm	7.1	8mm	2.58	65.6	0.81	20.6	4.80	122	3.8
-QFT13-CHF-10mm	7.1	10mm	2.70	68.6	0.81	20.6	4.80	122	3.8
-QFT13-CHF-12mm	10.5	12mm	2.90	73.6	0.81	20.6	4.80	122	7.6
-QFT13-CHF-14mm	10.5	14mm	2.90	73.6	0.97	24.6	4.80	122	7.6
-QFT13-CHF-16mm	13	16mm	3.06	77.6	0.97	24.6	4.80	122	14
-QFT13-CHF-18mm	13	18mm	3.06	77.6	0.97	24.6	4.80	122	14
-QFT13-CHF-20mm	13	20mm	3.06	77.6	0.97	24.6	4.80	122	14
-QFT13-CHF-25mm	19.5	25mm	4.80	121.9	1.25	31.8	5.94	151	24

# XYF-QFT系列分体式仪表球阀



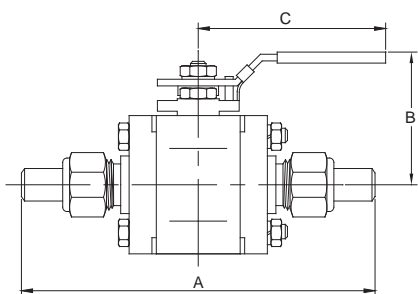
## XYF — QFT Split-type instrument ball valve

### ● -QFT13-CH型对焊对夹球阀 Butt welded wafer ball valve



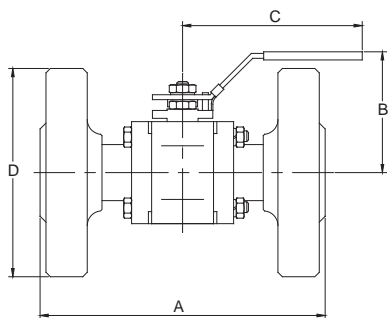
基本订货号 Order information	DN		T		A		B		C		Cv
	英寸 (in)	毫米 (mm)	英寸 (in)	毫米 (mm)	英寸 (in)	毫米 (mm)	英寸 (in)	毫米 (mm)	英寸 (in)	毫米 (mm)	
-QFT13-CH-4	4.8	1/4	2.58	65.6	0.81	20.6	4.80	122	1.2		
-QFT13-CH-6	7.1	3/8	2.70	68.6	0.81	20.6	4.80	122	3.8		
-QFT13-CH-8	10.5	1/2	2.90	73.6	0.81	20.6	4.80	122	7.6		
-QFT13-CH-12	13	3/4	3.06	77.6	0.97	24.6	4.80	122	14		
-QFT13-CH-16	19.5	1	4.80	121.9	1.25	31.8	5.94	151	24		
-QFT13-CH-6mm	4.8	6mm	2.58	65.6	0.81	20.6	4.80	122	1.2		
-QFT13-CH-8mm	4.8	8mm	2.58	65.6	0.81	20.6	4.80	122	3.8		
-QFT13-CH-10mm	7.1	10mm	2.70	68.6	0.81	20.6	4.80	122	3.8		
-QFT13-CH-12mm	7.1	12mm	2.90	73.6	0.81	20.6	4.80	122	7.6		
-QFT13-CH-14mm	7.1	14mm	2.90	73.6	0.97	24.6	4.80	122	7.6		
-QFT13-CH-16mm	10.5	16mm	3.06	77.6	0.97	24.6	4.80	122	14		
-QFT13-CH-18mm	13	18mm	3.06	77.6	0.97	24.6	4.80	122	14		
-QFT13-CH-20mm	13	20mm	3.06	77.6	0.97	24.6	4.80	122	14		
-QFT13-CH-25mm	19.5	25mm	4.80	121.9	1.25	31.8	5.94	151	24		

### ● -QFT13-PD型焊接对夹球阀 Butt welded wafer ball valve



基本订货号 Order information	DN		T (in/mm)	A		B		C	
	英寸 (in)	毫米 (mm)		英寸 (in)	毫米 (mm)	英寸 (in)	毫米 (mm)	英寸 (in)	毫米 (mm)
-QFT13-PD-17mm	3/8	10	17	10.6	268	1.97	50	3.74	95
-QFT13-PD-22mm	1/2	15	22	10.7	273	2.36	60	4.33	110
-QFT13-PD-27mm	3/4	20	27	11.2	285	2.48	63	4.33	110
-QFT13-PD-34mm	1	25	34	11.5	291	3.15	80	5.51	140
-QFT13-PD-42mm	1 1/4	32	42	12.3	312	3.39	86	5.51	140
-QFT13-PD-48mm	1 1/2	40	48	12.6	320	3.70	94	6.10	155
-QFT13-PD-60mm	2	50	60	13.7	347	4.09	104	7.09	180
-QFT13-PD-76mm	2 1/2	65	76	14.5	368	5.51	140	8.66	220
-QFT13-PD-89mm	3	80	89	15.7	398	5.91	150	10.2	260

### ● -QFT13-FH型法兰对夹球阀 Flange welded wafer ball valve



基本订货号 Order information	DN		A		B		C		D	
	英寸 (in)	毫米 (mm)	英寸 (in)	毫米 (mm)	英寸 (in)	毫米 (mm)	英寸 (in)	毫米 (mm)	英寸 (in)	毫米 (mm)
-QFT13-FH-1/2"	1/2	15	5.5	140	2.1	54	4.3	110	3.7	95
-QFT13-FH-3/4"	3/4	20	6.0	152	2.2	57	4.3	110	4.1	105
-QFT13-FH-1"	1	25	6.5	165	2.8	72	5.5	140	4.5	115
-QFT13-FH-1"	1 1/4	32	7.0	178	3.1	79	5.5	140	5.3	135
-QFT13-FH-1"	1 1/2	40	7.8	198	3.5	88	6.1	155	5.7	145
-QFT13-FH-2"	2	50	8.5	216	3.8	97	7.1	180	6.3	160
-QFT13-FH-2 1/2"	2 1/2	65	9.5	241	5.9	150	8.7	220	7.1	180
-QFT13-FH-3	3	80	11.1	283	6.3	160	10.2	260	7.7	195
-QFT13-FH-4	4	100	12.0	305	7.1	180	13.8	350	9.1	230

# SINYA

港商 扬中新亚自控工程有限公司  
独资 YANGZHONG SINYA AUTO-CONTROL ENGINEERING CO., LTD.

地址：江苏省扬中经济开发区兴隆港北路

Add: Xinglong Port, Yangzhong, Zhenjiang, Jiangsu, China

电话(Tel): 0511-88783806

传真(Fax): 0511-88451691

网址(Http): [www.sklok.com](http://www.sklok.com)

邮箱(E-mail): [sales@sklok.com](mailto:sales@sklok.com) [info@sklok.com](mailto:info@sklok.com)