




XYG-ZK 系列 真空管接头

XYG-ZK Vacuum Fitting

SINYA



目录 CONTENT

| | | | |
|--|----|---|--|
|  | 03 | ● | -ZK1型 外螺纹直通接头 Male Connector |
|  | 03 | ● | -ZK2型外螺纹弯通接头 Male Elbow |
|  | 04 | ● | -ZK6型直通中间接头 Straight Union |
|  | 04 | ● | -ZK6R型直通异径接头 Reducing Union |
|  | 05 | ● | -ZK9型弯通中间接头 Union Elbow |
|  | 05 | ● | -ZK3型三通中间接头 Union Tee |
|  | 06 | ● | -ZKTA型直通过渡接头 Let-look to UH line |
|  | 06 | ● | -ZKA型直通转换接头 UH line to Tube Adapter |
|  | 07 | ● | -ZK01型螺母 Nut |
|  | 07 | ● | -ZK02型O型圈 O-ring |

XYG-ZK系列真空管接头

以最灵活的方式提供一流式服务

本产品专用超高真空系统，装配时，用手指拧紧即可(配置滚花螺母)。在系统内，拆卸十分容易，重新配置也极其方便。对“ZK”系列管接头进行氦气泄漏测试时，其泄漏率为 4×10^{-9} ATM. cc/sec(大气压立方厘米/秒)。最大温度：242°C。

“ZK”系列管接头可以按客户要求事先在工厂内与各种型号的阀门配对组装好，然后再提供给客户，这些阀门包括：球阀、针形阀、隔膜阀、过滤器、止回阀等。

材料：该系列管接头所有金属零件的材料都是316型不锈钢。O形密封环的材料为氟化橡胶。

还可以根据用户选择其它材料。接头尺寸类型齐全，从1/8英寸到1英寸，公制从 $\Phi 4$ - $\Phi 22$ 涵盖整个系列。

XYG-ZK Vacuum Fitting

A single source with maximum flexibility.

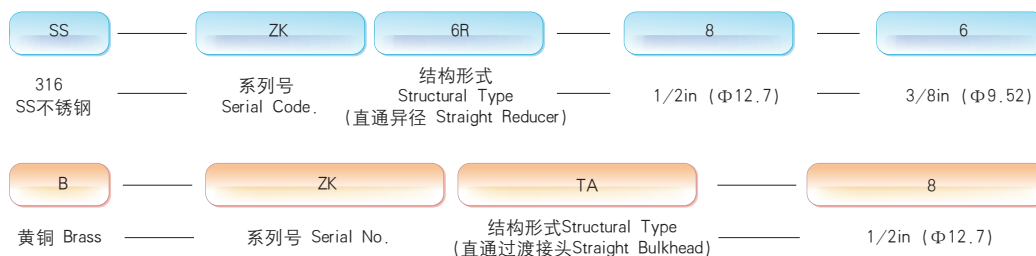
The products have been designed for ultra-vacuum systems, dealt with finger-tight assembly with knurled nuts. It can be easily removed and repositioned in the system. Helium leak tested to 4×10^{-9} ATM cc/sec. Maximum temperature would be 242°C.

“ZK”series fittings can be assembled to many kinds of valves, such as: ball valve, needle valve, diaphragm valve, filter, check valve and etc, as required by customers.

Materials: The fitting and its accessories are all made of 316 stainless steel with O-ring viton, also can be made of the materials specified by customers. Full range of sizes from 1/8" to 1" (British System) or from $\Phi 4$ to $\Phi 22$ (Metric System).

订货样例 Ordering example

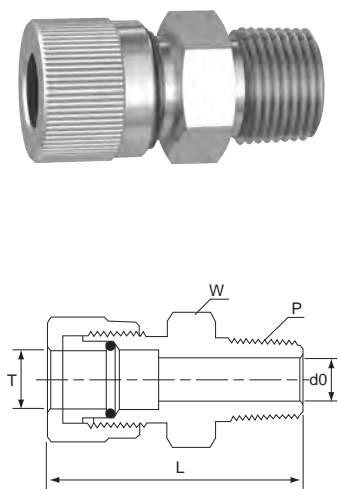
代表具有以下特点的ZK系列接头: ZK connectors with following features:



XYG-ZK系列真空管接头

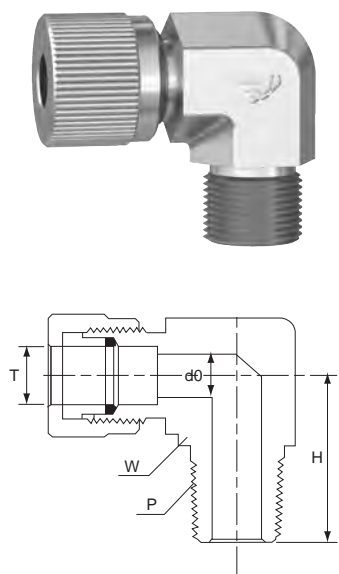
XYG-ZK Vacuum Fitting

● -ZK1型外螺纹直通接头 Male Connector



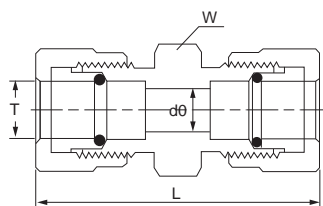
| 基本订货号 Order information | T | | d0 | | P | L | | W | |
|----------------------------|------------|------------|------------|------------|---------|------------|------------|------------|------------|
| | 英寸 (in) | 毫米 (mm) | 英寸 (in) | 毫米 (mm) | | 英寸 (in) | 毫米 (mm) | 英寸 (in) | 毫米 (mm) |
| -ZK1-2-2 | 1/8 | 3.2 | 0.09 | 2.2 | NPT1/8 | 1.14 | 29 | 0.47 | 12 |
| -ZK1-3-4 | 3/16 | 4.8 | 0.12 | 3.0 | NPT1/4 | 1.34 | 34 | 0.55 | 14 |
| -ZK1-4-4 | 1/4 | 6.4 | 0.19 | 4.8 | NPT1/4 | 1.42 | 36 | 0.55 | 14 |
| -ZK1-5-6 | 5/16 | 7.9 | 0.25 | 6.4 | NPT3/8 | 1.50 | 38 | 0.67 | 17 |
| -ZK1-6-6 | 3/8 | 9.5 | 0.28 | 7.1 | NPT3/8 | 1.54 | 39 | 0.67 | 17 |
| -ZK1-8-8 | 1/2 | 12.7 | 0.41 | 10.4 | NPT1/2 | 1.81 | 46 | 0.87 | 22 |
| -ZK1-10-8 | 5/8 | 15.9 | 0.50 | 12.7 | NPT1/2 | 1.89 | 48 | 0.94 | 24 |
| -ZK1-12-12 | 3/4 | 19.1 | 0.62 | 15.7 | NPT3/4 | 1.97 | 50 | 1.06 | 27 |
| -ZK1-14-12 | 7/8 | 22.2 | 0.72 | 18.3 | NPT3/4 | 2.05 | 52 | 1.18 | 30 |
| -ZK1-16-16 | 1 | 25.4 | 0.88 | 22.3 | NPT1 | 2.32 | 59 | 1.34 | 34 |
| -ZK1-4mm-2 | 0.16 | 4 | 0.12 | 3 | BSPT1/8 | 1.14 | 29 | 0.47 | 12 |
| -ZK1-6mm-4 | 0.24 | 6 | 0.16 | 4 | BSPT1/4 | 1.26 | 32 | 0.55 | 14 |
| -ZK1-8mm-2 | 0.31 | 8 | 0.24 | 6 | BSPT1/4 | 1.42 | 36 | 0.67 | 17 |
| -ZK1-10mm-6 | 0.39 | 10 | 0.31 | 8 | BSPT3/8 | 1.54 | 39 | 0.67 | 17 |
| -ZK1-12mm-6 | 0.47 | 12 | 0.39 | 10 | BSPT3/8 | 1.65 | 42 | 0.75 | 19 |
| -ZK1-14mm-8 | 0.55 | 14 | 0.43 | 11 | BSPT1/2 | 1.81 | 46 | 0.87 | 22 |
| -ZK1-16mm-8 | 0.63 | 16 | 0.47 | 12 | BSPT1/2 | 1.89 | 48 | 0.94 | 24 |
| -ZK1-18mm-12 | 0.71 | 18 | 0.51 | 13 | BSPT3/4 | 1.97 | 50 | 1.06 | 27 |
| -ZK1-20mm-12 | 0.79 | 20 | 0.59 | 15 | BSPT3/4 | 2.05 | 52 | 1.18 | 30 |
| -ZK1-22mm-16 | 0.87 | 22 | 0.63 | 16 | BSPT1 | 2.32 | 59 | 1.34 | 34 |

● -ZK2型外螺纹弯通接头 Male Elbow



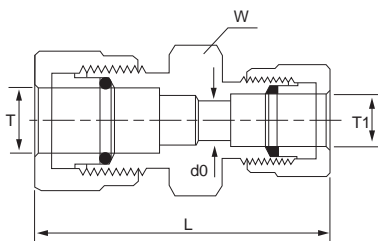
| 基本订货号 Order information | T | | d0 | | P | H | | W | |
|----------------------------|------------|------------|------------|------------|---------|------------|------------|------------|------------|
| | 英寸 (in) | 毫米 (mm) | 英寸 (in) | 毫米 (mm) | | 英寸 (in) | 毫米 (mm) | 英寸 (in) | 毫米 (mm) |
| -ZK2-2-2 | 1/8 | 3.2 | 0.09 | 2.2 | NPT1/8 | 0.67 | 17 | 0.37 | 9.5 |
| -ZK2-3-4 | 3/16 | 4.8 | 0.12 | 3.0 | NPT1/4 | 0.79 | 20 | 0.56 | 14.2 |
| -ZK2-4-4 | 1/4 | 6.4 | 0.19 | 4.8 | NPT1/4 | 0.83 | 21 | 0.56 | 14.2 |
| -ZK2-5-6 | 5/16 | 7.9 | 0.25 | 6.4 | NPT3/8 | 0.98 | 25 | 0.69 | 17.4 |
| -ZK2-6-6 | 3/8 | 9.5 | 0.28 | 7.1 | NPT3/8 | 1.02 | 26 | 0.69 | 17.4 |
| -ZK2-8-8 | 1/2 | 12.7 | 0.41 | 10.4 | NPT1/2 | 1.22 | 31 | 0.94 | 23.8 |
| -ZK2-10-8 | 5/8 | 15.9 | 0.50 | 12.7 | NPT1/2 | 1.26 | 32 | 0.94 | 23.8 |
| -ZK2-12-12 | 3/4 | 19.1 | 0.62 | 15.7 | NPT3/4 | 1.34 | 34 | 1.06 | 27.0 |
| -ZK2-14-12 | 7/8 | 22.2 | 0.72 | 18.3 | NPT3/4 | 1.42 | 36 | 1.06 | 27.0 |
| -ZK2-16-16 | 1 | 25.4 | 0.88 | 22.3 | NPT1 | 1.65 | 42 | 1.30 | 33.0 |
| -ZK2-4mm-2 | 0.16 | 4 | 0.12 | 3 | BSPT1/8 | 0.67 | 17 | 0.37 | 9.5 |
| -ZK2-6mm-4 | 0.24 | 6 | 0.16 | 4 | BSPT1/4 | 0.83 | 21 | 0.56 | 14.2 |
| -ZK2-8mm-4 | 0.31 | 8 | 0.24 | 6 | BSPT1/4 | 0.87 | 22 | 0.56 | 14.2 |
| -ZK2-10mm-6 | 0.39 | 10 | 0.31 | 8 | BSPT3/8 | 0.98 | 25 | 0.69 | 17.4 |
| -ZK2-12mm-6 | 0.47 | 12 | 0.39 | 10 | BSPT3/8 | 1.02 | 26 | 0.75 | 19.0 |
| -ZK2-14mm-8 | 0.55 | 14 | 0.43 | 11 | BSPT1/2 | 1.26 | 32 | 0.94 | 23.8 |
| -ZK2-16mm-8 | 0.63 | 16 | 0.47 | 12 | BSPT1/2 | 1.34 | 34 | 0.94 | 23.8 |
| -ZK2-18mm-12 | 0.71 | 18 | 0.51 | 13 | BSPT3/4 | 1.42 | 36 | 1.06 | 27.0 |
| -ZK2-20mm-12 | 0.79 | 20 | 0.59 | 15 | BSPT3/4 | 1.50 | 38 | 1.06 | 27.0 |
| -ZK2-22mm-16 | 0.87 | 22 | 0.63 | 16 | BSPT1 | 1.69 | 43 | 1.30 | 33.0 |

● -ZK6型直通中间接头 Straight Union



| 基本订货号 Order information | T | | d0 | | L | | W | |
|----------------------------|------------|------------|------------|------------|------------|------------|------------|------------|
| | 英寸 (in) | 毫米 (mm) | 英寸 (in) | 毫米 (mm) | 英寸 (in) | 毫米 (mm) | 英寸 (in) | 毫米 (mm) |
| -ZK6-2 | 1/8 | 3.2 | 0.09 | 2.2 | 1.34 | 34 | 0.47 | 12 |
| -ZK6-3 | 3/16 | 4.8 | 0.12 | 3.0 | 1.42 | 36 | 0.55 | 14 |
| -ZK6-4 | 1/4 | 6.4 | 0.19 | 4.8 | 1.50 | 38 | 0.55 | 14 |
| -ZK6-5 | 5/16 | 7.9 | 0.25 | 6.4 | 1.57 | 40 | 0.67 | 17 |
| -ZK6-6 | 3/8 | 9.5 | 0.28 | 7.1 | 1.69 | 43 | 0.67 | 17 |
| -ZK6-8 | 1/2 | 12.7 | 0.41 | 10.4 | 1.85 | 47 | 0.87 | 22 |
| -ZK6-10 | 5/8 | 15.9 | 0.50 | 12.7 | 1.97 | 50 | 0.94 | 24 |
| -ZK6-12 | 3/4 | 19.1 | 0.62 | 15.7 | 2.05 | 52 | 1.06 | 27 |
| -ZK6-14 | 7/8 | 22.2 | 0.72 | 18.3 | 2.13 | 54 | 1.18 | 30 |
| -ZK6-16 | 1 | 25.4 | 0.88 | 22.3 | 2.44 | 62 | 1.34 | 34 |
| -ZK6-4mm | 0.16 | 4 | 0.12 | 3 | 1.34 | 34 | 0.47 | 12 |
| -ZK6-6mm | 0.24 | 6 | 0.16 | 4 | 1.42 | 36 | 0.55 | 14 |
| -ZK6-8mm | 0.31 | 8 | 0.24 | 6 | 1.54 | 39 | 0.67 | 17 |
| -ZK6-10mm | 0.39 | 10 | 0.31 | 8 | 1.65 | 42 | 0.67 | 17 |
| -ZK6-12mm | 0.47 | 12 | 0.39 | 10 | 1.81 | 46 | 0.75 | 19 |
| -ZK6-14mm | 0.55 | 14 | 0.43 | 11 | 1.97 | 50 | 0.87 | 22 |
| -ZK6-16mm | 0.63 | 16 | 0.47 | 12 | 2.05 | 52 | 0.94 | 24 |
| -ZK6-18mm | 0.71 | 18 | 0.51 | 13 | 2.09 | 53 | 1.06 | 27 |
| -ZK6-20mm | 0.79 | 20 | 0.59 | 15 | 2.17 | 55 | 1.18 | 30 |
| -ZK6-22mm | 0.87 | 22 | 0.63 | 16 | 2.20 | 56 | 1.34 | 34 |

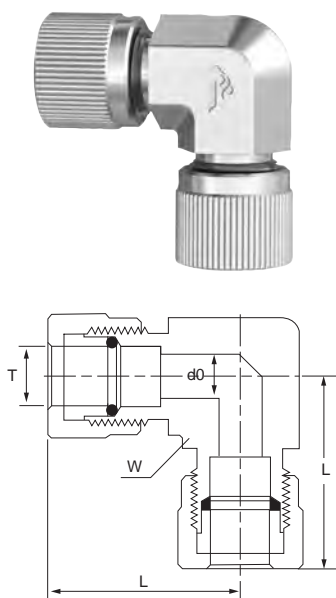
● -ZK6R型直通异径接头 Reducing Union



| 基本订货号 Order information | T | | T1 | | d0 | | L | | W | |
|----------------------------|------------|------------|------------|------------|------------|------------|------------|------------|------------|------------|
| | 英寸 (in) | 毫米 (mm) | 英寸 (in) | 毫米 (mm) | 英寸 (in) | 毫米 (mm) | 英寸 (in) | 毫米 (mm) | 英寸 (in) | 毫米 (mm) |
| -ZK6R-3-2 | 3/16 | 4.8 | 1/8 | 3.2 | 0.09 | 2.2 | 1.34 | 34 | 0.55 | 14 |
| -ZK6R-4-3 | 1/4 | 6.4 | 3/16 | 4.8 | 0.12 | 3.0 | 1.38 | 35 | 0.55 | 14 |
| -ZK6R-5-4 | 5/16 | 7.9 | 1/4 | 6.4 | 0.19 | 4.8 | 1.50 | 38 | 0.67 | 17 |
| -ZK6R-6-5 | 3/8 | 9.5 | 5/16 | 7.9 | 0.25 | 6.4 | 1.61 | 41 | 0.67 | 17 |
| -ZK6R-8-6 | 1/2 | 12.7 | 3/8 | 9.5 | 0.28 | 7.1 | 1.77 | 45 | 0.87 | 22 |
| -ZK6R-10-8 | 5/8 | 15.9 | 1/2 | 12.7 | 0.41 | 10.4 | 1.89 | 48 | 0.94 | 24 |
| -ZK6R-12-10 | 3/4 | 19.1 | 5/8 | 15.9 | 0.50 | 12.7 | 1.97 | 50 | 1.06 | 27 |
| -ZK6R-14-12 | 7/8 | 22.2 | 3/4 | 19.1 | 0.62 | 15.7 | 2.05 | 52 | 1.18 | 30 |
| -ZK6R-16-14 | 1 | 25.4 | 7/8 | 22.2 | 0.72 | 18.3 | 2.28 | 58 | 1.34 | 34 |
| -ZK6R-6mm-4mm | 0.24 | 6 | 0.16 | 4 | 0.12 | 3 | 1.34 | 34 | 0.55 | 14 |
| -ZK6R-8mm-6mm | 0.31 | 8 | 0.24 | 6 | 0.16 | 4 | 1.46 | 37 | 0.67 | 17 |
| -ZK6R-10mm-8mm | 0.39 | 10 | 0.31 | 8 | 0.24 | 6 | 1.61 | 41 | 0.67 | 17 |
| -ZK6R-12mm-10mm | 0.47 | 12 | 0.39 | 10 | 0.31 | 8 | 1.77 | 45 | 0.75 | 19 |
| -ZK6R-14mm-12mm | 0.55 | 14 | 0.47 | 12 | 0.39 | 10 | 1.89 | 48 | 0.87 | 22 |
| -ZK6R-16mm-14mm | 0.63 | 16 | 0.55 | 14 | 0.43 | 11 | 1.97 | 50 | 0.94 | 24 |
| -ZK6R-18mm-16mm | 0.71 | 18 | 0.63 | 16 | 0.47 | 12 | 2.05 | 52 | 1.06 | 27 |
| -ZK6R-20mm-18mm | 0.79 | 20 | 0.71 | 18 | 0.51 | 13 | 2.13 | 54 | 1.18 | 30 |
| -ZK6R-22mm-20mm | 0.87 | 22 | 0.79 | 20 | 0.59 | 15 | 2.20 | 56 | 1.34 | 34 |

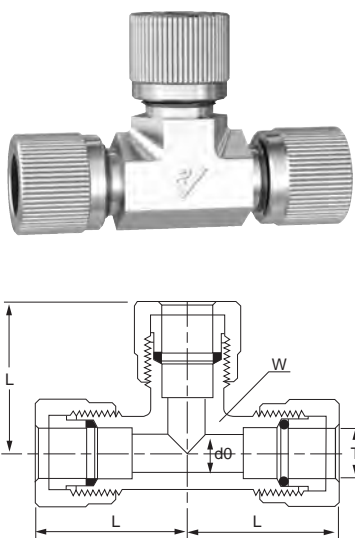
XYG-ZK Vacuum Fitting

● -ZK9型弯通中间接头 Union Elbow



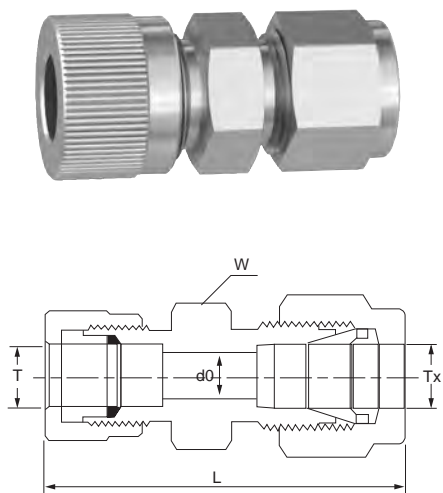
| 基本订货号 Order information | T | | d0 | | L | | W | |
|----------------------------|------------|------------|------------|------------|------------|------------|------------|------------|
| | 英寸 (in) | 毫米 (mm) | 英寸 (in) | 毫米 (mm) | 英寸 (in) | 毫米 (mm) | 英寸 (in) | 毫米 (mm) |
| -ZK9-2 | 1/8 | 3.2 | 0.09 | 2.2 | 0.83 | 21 | 0.37 | 9.5 |
| -ZK9-3 | 3/16 | 4.8 | 0.12 | 3.0 | 0.94 | 24 | 0.56 | 14.2 |
| -ZK9-4 | 1/4 | 6.4 | 0.19 | 4.8 | 0.98 | 25 | 0.56 | 14.2 |
| -ZK9-5 | 5/16 | 7.9 | 0.25 | 6.4 | 1.02 | 26 | 0.69 | 17.4 |
| -ZK9-6 | 3/8 | 9.5 | 0.28 | 7.1 | 1.10 | 28 | 0.69 | 17.4 |
| -ZK9-8 | 1/2 | 12.7 | 0.41 | 10.4 | 1.26 | 32 | 0.94 | 23.8 |
| -ZK9-10 | 5/8 | 15.9 | 0.50 | 12.7 | 1.38 | 35 | 0.94 | 23.8 |
| -ZK9-12 | 3/4 | 19.1 | 0.62 | 15.7 | 1.50 | 38 | 1.06 | 27 |
| -ZK9-14 | 7/8 | 22.2 | 0.72 | 18.3 | 1.61 | 41 | 1.06 | 27 |
| -ZK9-16 | 1 | 25.4 | 0.88 | 22.3 | 1.73 | 44 | 1.30 | 33 |
| -ZK9-4mm | 0.16 | 4 | 0.12 | 3 | 0.79 | 20 | 0.37 | 9.5 |
| -ZK9-6mm | 0.24 | 6 | 0.16 | 4 | 0.91 | 23 | 0.56 | 14.2 |
| -ZK9-8mm | 0.31 | 8 | 0.24 | 6 | 0.91 | 23 | 0.56 | 14.2 |
| -ZK9-10mm | 0.39 | 10 | 0.31 | 8 | 0.98 | 25 | 0.69 | 17.4 |
| -ZK9-12mm | 0.47 | 12 | 0.39 | 10 | 1.02 | 26 | 0.75 | 19 |
| -ZK9-14mm | 0.55 | 14 | 0.43 | 11 | 1.26 | 32 | 0.94 | 23.8 |
| -ZK9-16mm | 0.63 | 16 | 0.47 | 12 | 1.26 | 32 | 0.94 | 23.8 |
| -ZK9-18mm | 0.71 | 18 | 0.51 | 13 | 1.46 | 37 | 1.06 | 27 |
| -ZK9-20mm | 0.79 | 20 | 0.59 | 15 | 1.50 | 38 | 1.06 | 27 |
| -ZK9-22mm | 0.87 | 22 | 0.63 | 16 | 1.65 | 42 | 1.30 | 33 |

● -ZK3型三通中间接头 Union Tee



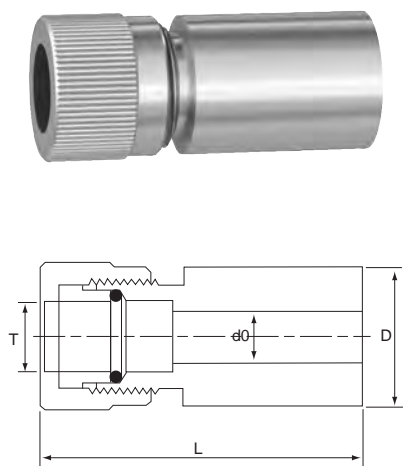
| 基本订货号 Order information | T | | d0 | | L | | W | |
|----------------------------|------------|------------|------------|------------|------------|------------|------------|------------|
| | 英寸 (in) | 毫米 (mm) | 英寸 (in) | 毫米 (mm) | 英寸 (in) | 毫米 (mm) | 英寸 (in) | 毫米 (mm) |
| -ZK3-2 | 1/8 | 3.2 | 0.09 | 2.2 | 0.83 | 21 | 0.37 | 9.5 |
| -ZK3-3 | 3/16 | 4.8 | 0.12 | 3.0 | 0.94 | 24 | 0.56 | 14.2 |
| -ZK3-4 | 1/4 | 6.4 | 0.19 | 4.8 | 0.98 | 25 | 0.56 | 14.2 |
| -ZK3-5 | 5/16 | 7.9 | 0.25 | 6.4 | 1.02 | 26 | 0.69 | 17.4 |
| -ZK3-6 | 3/8 | 9.5 | 0.28 | 7.1 | 1.10 | 28 | 0.69 | 17.4 |
| -ZK3-8 | 1/2 | 12.7 | 0.41 | 10.4 | 1.26 | 32 | 0.94 | 23.8 |
| -ZK3-10 | 5/8 | 15.9 | 0.50 | 12.7 | 1.38 | 35 | 0.94 | 23.8 |
| -ZK3-12 | 3/4 | 19.1 | 0.62 | 15.7 | 1.50 | 38 | 1.06 | 27.0 |
| -ZK3-14 | 7/8 | 22.2 | 0.72 | 18.3 | 1.61 | 41 | 1.06 | 27.0 |
| -ZK3-16 | 1 | 25.4 | 0.88 | 22.3 | 1.73 | 44 | 1.30 | 33.0 |
| -ZK3-4mm | 0.16 | 4 | 0.12 | 3 | 0.79 | 20 | 0.37 | 9.5 |
| -ZK3-6mm | 0.24 | 6 | 0.16 | 4 | 0.91 | 23 | 0.56 | 14.2 |
| -ZK3-8mm | 0.31 | 8 | 0.24 | 6 | 0.91 | 23 | 0.56 | 14.2 |
| -ZK3-10mm | 0.39 | 10 | 0.31 | 8 | 0.98 | 25 | 0.69 | 17.4 |
| -ZK3-12mm | 0.47 | 12 | 0.39 | 10 | 1.02 | 26 | 0.75 | 19.0 |
| -ZK3-14mm | 0.55 | 14 | 0.43 | 11 | 1.26 | 32 | 0.94 | 23.8 |
| -ZK3-16mm | 0.63 | 16 | 0.47 | 12 | 1.26 | 32 | 0.94 | 23.8 |
| -ZK3-18mm | 0.71 | 18 | 0.51 | 13 | 1.46 | 37 | 1.06 | 27.0 |
| -ZK3-20mm | 0.79 | 20 | 0.59 | 15 | 1.50 | 38 | 1.06 | 27.0 |
| -ZK3-22mm | 0.87 | 22 | 0.63 | 16 | 1.65 | 42 | 1.30 | 33.0 |

◎ -ZKTA型直通过渡接头 Let-lok to UH line



| 基本订货号 Order information | T | | d0 | | Tx | | L | | W | |
|----------------------------|------------|------------|------------|------------|------------|------------|------------|------------|------------|------------|
| | 英寸 (in) | 毫米 (mm) | 英寸 (in) | 毫米 (mm) | 英寸 (in) | 毫米 (mm) | 英寸 (in) | 毫米 (mm) | 英寸 (in) | 毫米 (mm) |
| -ZKTA-2 | 1/8 | 3.2 | 0.09 | 2.2 | 1/8 | 3.2 | 1.38 | 35 | 0.44 | 11.1 |
| -ZKTA-3 | 3/16 | 4.8 | 0.12 | 3.0 | 3/16 | 4.8 | 1.42 | 36 | 0.50 | 12.7 |
| -ZKTA-4 | 1/4 | 6.4 | 0.19 | 4.8 | 1/4 | 6.4 | 1.50 | 38 | 0.56 | 14.2 |
| -ZKTA-5 | 5/16 | 7.9 | 0.25 | 6.4 | 5/16 | 7.9 | 1.57 | 40 | 0.62 | 15.8 |
| -ZKTA-6 | 3/8 | 9.5 | 0.28 | 7.1 | 3/8 | 9.5 | 1.65 | 42 | 0.69 | 17.4 |
| -ZKTA-8 | 1/2 | 12.7 | 0.41 | 10.4 | 1/2 | 12.7 | 1.89 | 48 | 0.87 | 22.2 |
| -ZKTA-10 | 5/8 | 15.9 | 0.50 | 12.7 | 5/8 | 15.9 | 1.97 | 50 | 1.00 | 25.4 |
| -ZKTA-12 | 3/4 | 19.1 | 0.62 | 15.7 | 3/4 | 19.1 | 2.05 | 52 | 1.13 | 28.6 |
| -ZKTA-14 | 7/8 | 22.2 | 0.72 | 18.3 | 7/8 | 22.2 | 2.13 | 54 | 1.25 | 31.8 |
| -ZKTA-16 | 1 | 25.4 | 0.88 | 22.3 | 1 | 25.4 | 2.44 | 62 | 1.50 | 38.1 |
| -ZKTA-4mm | 0.16 | 4 | 0.12 | 3 | 0.16 | 4 | 1.38 | 35 | 0.47 | 12 |
| -ZKTA-6mm | 0.24 | 6 | 0.16 | 4 | 0.24 | 6 | 1.50 | 38 | 0.55 | 14 |
| -ZKTA-8mm | 0.31 | 8 | 0.24 | 6 | 0.31 | 8 | 1.57 | 40 | 0.55 | 14 |
| -ZKTA-10mm | 0.39 | 10 | 0.31 | 8 | 0.39 | 10 | 1.65 | 42 | 0.67 | 17 |
| -ZKTA-12mm | 0.47 | 12 | 0.39 | 10 | 0.47 | 12 | 1.81 | 46 | 0.87 | 22 |
| -ZKTA-14mm | 0.55 | 14 | 0.43 | 11 | 0.55 | 14 | 1.89 | 48 | 0.94 | 24 |
| -ZKTA-16mm | 0.63 | 16 | 0.47 | 12 | 0.63 | 16 | 1.97 | 50 | 0.94 | 24 |
| -ZKTA-18mm | 0.71 | 18 | 0.51 | 13 | 0.71 | 18 | 2.05 | 52 | 1.06 | 27 |
| -ZKTA-20mm | 0.79 | 20 | 0.59 | 15 | 0.79 | 20 | 2.13 | 54 | 1.18 | 30 |
| -ZKTA-22mm | 0.87 | 22 | 0.63 | 16 | 0.87 | 22 | 2.20 | 56 | 1.18 | 30 |

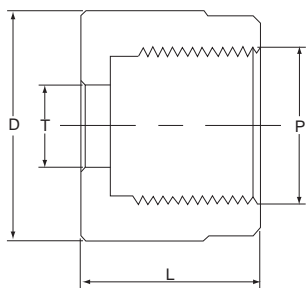
◎ -ZKA型直通转换接头 UH line to Tube Adapter



| 基本订货号 Order information | T | | d0 | | L | | W | |
|----------------------------|------------|------------|------------|------------|------------|------------|------------|------------|
| | 英寸 (in) | 毫米 (mm) | 英寸 (in) | 毫米 (mm) | 英寸 (in) | 毫米 (mm) | 英寸 (in) | 毫米 (mm) |
| -ZKA-2-4 | 1/8 | 3.2 | 0.09 | 2.2 | 1/4 | 6.4 | 0.94 | 24 |
| -ZKA-3-5 | 3/16 | 4.8 | 0.12 | 3.0 | 5/16 | 7.9 | 1.02 | 26 |
| -ZKA-4-6 | 1/4 | 6.4 | 0.19 | 4.8 | 3/8 | 9.5 | 1.14 | 29 |
| -ZKA-5-8 | 5/16 | 7.9 | 0.25 | 6.4 | 1/2 | 12.7 | 1.26 | 32 |
| -ZKA-6-12 | 3/8 | 9.5 | 0.28 | 7.1 | 3/4 | 19.1 | 1.42 | 36 |
| -ZKA-8-14 | 1/2 | 12.7 | 0.41 | 10.4 | 7/8 | 22.2 | 1.57 | 40 |
| -ZKA-10-16 | 5/8 | 15.9 | 0.50 | 12.7 | 1 | 25.4 | 1.73 | 44 |
| -ZKA-12-18 | 3/4 | 19.1 | 0.62 | 15.7 | 11/8 | 28.6 | 1.89 | 48 |
| -ZKA-14-20 | 7/8 | 22.2 | 0.72 | 18.3 | 11/4 | 31.2 | 2.05 | 52 |
| -ZKA-16-24 | 1 | 25.4 | 0.88 | 22.3 | 11/2 | 38.1 | 2.36 | 60 |
| -ZKA-4mm-10mm | 0.16 | 4 | 0.12 | 3 | 0.39 | 10 | 1.02 | 26 |
| -ZKA-6mm-12mm | 0.24 | 6 | 0.16 | 4 | 0.47 | 12 | 1.10 | 28 |
| -ZKA-8mm-16mm | 0.31 | 8 | 0.24 | 6 | 0.63 | 16 | 2.36 | 60 |
| -ZKA-10mm-20mm | 0.39 | 10 | 0.31 | 8 | 0.79 | 20 | 1.30 | 33 |
| -ZKA-12mm-26mm | 0.47 | 12 | 0.39 | 10 | 1.02 | 26 | 1.42 | 36 |
| -ZKA-14mm-30mm | 0.55 | 14 | 0.43 | 11 | 1.18 | 30 | 1.57 | 40 |
| -ZKA-16mm-32mm | 0.63 | 16 | 0.47 | 12 | 1.26 | 32 | 1.73 | 44 |
| -ZKA-18mm-32mm | 0.71 | 18 | 0.51 | 13 | 1.34 | 34 | 1.89 | 48 |
| -ZKA-20mm-36mm | 0.79 | 20 | 0.59 | 15 | 1.42 | 36 | 2.05 | 52 |
| -ZKA-22mm-38mm | 0.87 | 22 | 0.63 | 16 | 1.50 | 38 | 2.36 | 60 |

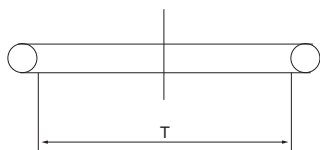
XYG-ZK Vacuum Fitting

● -ZK01型螺母 Nut



| 基本订货号 Order information | T | | P | D | | L | |
|----------------------------|------------|------------|--------------|------------|------------|------------|------------|
| | 英寸 (in) | 毫米 (mm) | | 英寸 (in) | 毫米 (mm) | 英寸 (in) | 毫米 (mm) |
| -ZK01-2 | 1/8 | 3.2 | 3/8-20UN | 0.56 | 14.2 | 0.41 | 10.5 |
| -ZK01-3 | 3/16 | 4.8 | 7/16-20UNF | 0.62 | 15.8 | 0.44 | 11.1 |
| -ZK01-4 | 1/4 | 6.4 | 1/2-20UNF | 0.69 | 17.4 | 0.53 | 13.5 |
| -ZK01-5 | 5/16 | 7.9 | 9/16-20UN | 0.75 | 19.0 | 0.56 | 14.2 |
| -ZK01-6 | 3/8 | 9.5 | 5/8-20UN | 0.81 | 20.6 | 0.62 | 15.7 |
| -ZK01-8 | 1/2 | 12.7 | 3/4-20UNEF | 0.94 | 23.8 | 0.62 | 15.7 |
| -ZK01-10 | 5/8 | 15.9 | 15/16-20UNEF | 1.13 | 28.6 | 0.62 | 15.7 |
| -ZK01-12 | 3/4 | 19.1 | 11/16-20UN | 1.25 | 31.8 | 0.72 | 18.3 |
| -ZK01-14 | 7/8 | 22.2 | 11/8-20UN | 1.38 | 35.0 | 0.72 | 18.3 |
| -ZK01-16 | 1 | 25.4 | 13/8-20UN | 1.56 | 39.6 | 0.72 | 18.3 |
| -ZK01-4mm | 0.16 | 4 | M10 × 1 | 0.55 | 14.0 | 0.47 | 12.0 |
| -ZK01-6mm | 0.24 | 6 | M12 × 1.25 | 0.71 | 18.0 | 0.55 | 14.0 |
| -ZK01-8mm | 0.31 | 8 | M14 × 1.5 | 0.83 | 21.0 | 0.59 | 15.0 |
| -ZK01-10mm | 0.39 | 10 | M16 × 1.5 | 0.91 | 23.0 | 0.63 | 16.0 |
| -ZK01-12mm | 0.47 | 12 | M20 × 1.5 | 1.02 | 26.0 | 0.63 | 16.0 |
| -ZK01-14mm | 0.55 | 14 | M22 × 1.5 | 1.14 | 29.0 | 0.71 | 18.0 |
| -ZK01-16mm | 0.63 | 16 | M24 × 1.5 | 1.26 | 32.0 | 0.71 | 18.0 |
| -ZK01-18mm | 0.71 | 18 | M27 × 1.5 | 1.42 | 36.0 | 0.79 | 20.0 |
| -ZK01-20mm | 0.79 | 20 | M30 × 1.5 | 1.50 | 38.0 | 0.79 | 20.0 |
| -ZK01-22mm | 0.87 | 22 | M32 × 1.5 | 1.57 | 40.0 | 0.79 | 20.0 |

● -ZK02型O型圈 O-ring



| 基本订货号 Order information | 代号 | T |
|----------------------------|------|------|
| -ZK02-2 | A006 | 1/8 |
| -ZK02-3 | A008 | 3/16 |
| -ZK02-4 | A010 | 1/4 |
| -ZK02-5 | A011 | 5/16 |
| -ZK02-6 | A012 | 3/8 |
| -ZK02-8 | A014 | 1/2 |
| -ZK02-10 | A016 | 5/8 |
| -ZK02-12 | A018 | 3/4 |
| -ZK02-14 | A020 | 7/8 |
| -ZK02-16 | A022 | 1 |
| -ZK02-4mm | P4 | 4 |
| -ZK02-6mm | P6 | 6 |
| -ZK02-8mm | P8 | 8 |
| -ZK02-10mm | P10 | 10 |
| -ZK02-12mm | P12 | 12 |
| -ZK02-14mm | P14 | 14 |
| -ZK02-16mm | P16 | 16 |
| -ZK02-18mm | P18 | 18 |
| -ZK02-20mm | P20 | 20 |
| -ZK02-22mm | P22 | 22 |

SINYA

港商 扬中新亚自控工程有限公司
独资 YANGZHONG SINYA AUTO-CONTROL ENGINEERING CO., LTD.

地址：江苏省扬中经济开发区兴隆港北路

Add: Xinglong Port, Yangzhong, Zhenjiang, Jiangsu, China

电话(Tel): 0511-88783806

传真(Fax): 0511-88451691

网址(Http): www.sklok.com

邮箱(E-mail): sales@sklok.com info@sklok.com